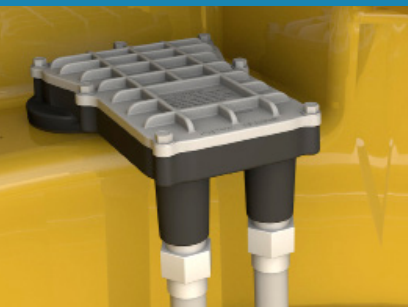
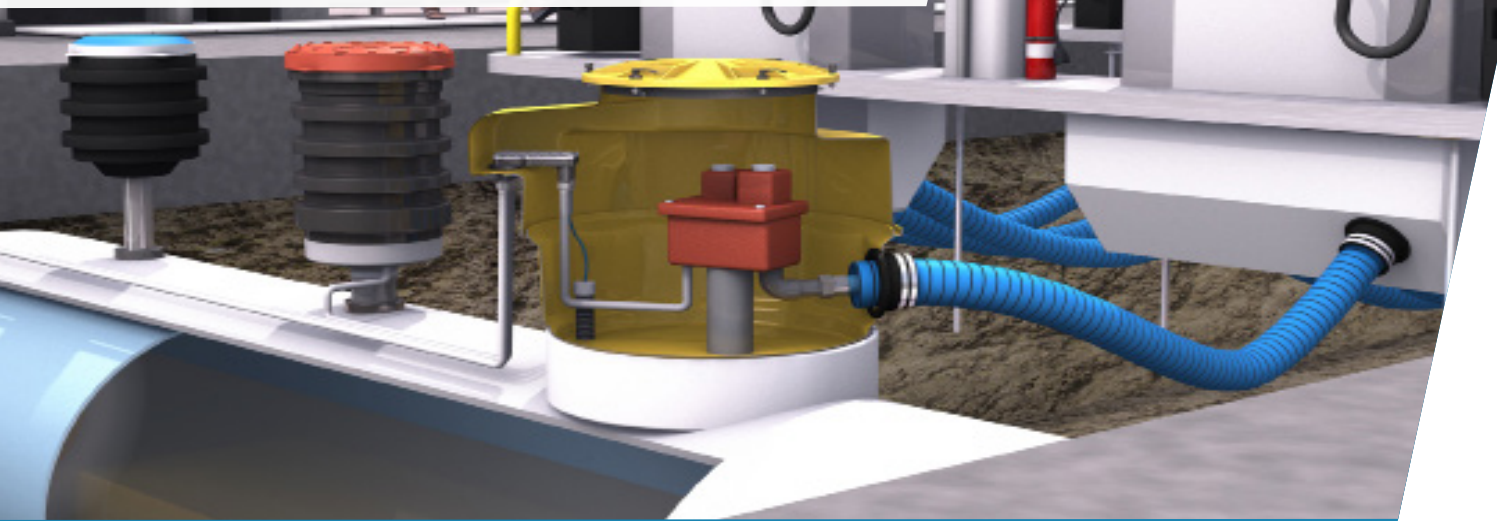


**NEW!**

# ElectroTITE

**NO DRILL DRY SUMP TECHNOLOGY\***

\*Patent Pending



Factory Installed  
No On-Site Drilling\*

\*Patent Pending



Conduit Threads  
On Outside of Box\*

\*Patent Pending



UL Listed Explosion-Proof  
Junction Box\*

\*Patent Pending

## NO DRILL | WIRE READY | WATER TIGHT

- Eliminates electrician cutting holes in sump
- Easy inspection without entering confined sump area
- Available in a wide variety of models to accommodate virtually any tank sump application
- Kwik Wire™\* junction box allows for high voltage STP and low voltage sensor wires in same box. \*Patent Pending
- Sealed conduits above water table
- No conduit entry fittings

**Please contact your OPW District Manager to order or request more information.**  
**Visit us at [www.opwglobal.com/electrotite](http://www.opwglobal.com/electrotite)**

**OPW**   
a **DOVER** company

[www.opwglobal.com](http://www.opwglobal.com)

**NEW!**



**NO DRILL DRY SUMP TECHNOLOGY\***

\*Patent Pending

Introducing the latest OPW tank sump innovation from the engineering labs of FLEXWORKS and FIBRELITE. ElectroTite is the most watertight system on the market. It ships factory installed with conduit ports and electrical wiring box – eliminating unnecessary tank sump leak points at site installation. No drill, no water, no sweat.

## FEATURES & BENEFITS

### Water Tight:

- Reduces the number of entry and leak points into sump
- Sealed conduit threads on outside of sump – enter above water table
- Factory installed fitting with proper torque guns and cutting tools and sealing compounds

### Versatile for Your Installation:

- UL Listed Explosion-Proof junction box allows space to re-route communication wires and loop additional sensors without entering sump
- Shield allows for high voltage and sensor wires in same box
- Conduits can be potted entering box, exiting box, or both
- UL Listed Explosion-proof box is single-piece cast aluminum, with bolt-on access cover

### Factory Installed:

- Eliminates the need to cut holes in sump
- No field-installed conduit penetrations

### Accessible:

- Able to install, inspect and repair conduit lines high up in tank sump
- Can reach into box for inspection without entering confined sump area

### Consolidates Multiple Components. Replaces up to 6:

- Conduit entry fittings
- Conduit seal-offs (for choco pours)
- Explosion proof junction boxes

### Additional Features:

- Ability to install 62M Cap Inspection Port on lid
- Round U Channel in base to hold resin for top hat (attaches with RK-5000)
- Top hat trims down for 12.5" height adjustment
- 42" or 48" collar mount or solid base attachment
- Can be ordered with one junction box for basic power and sensor. Or can add second box for up to six conduits

**Please contact your OPW District Manager to order or request more information. Visit us at [www.opwglobal.com/electrotite](http://www.opwglobal.com/electrotite)**



[www.opwglobal.com](http://www.opwglobal.com)