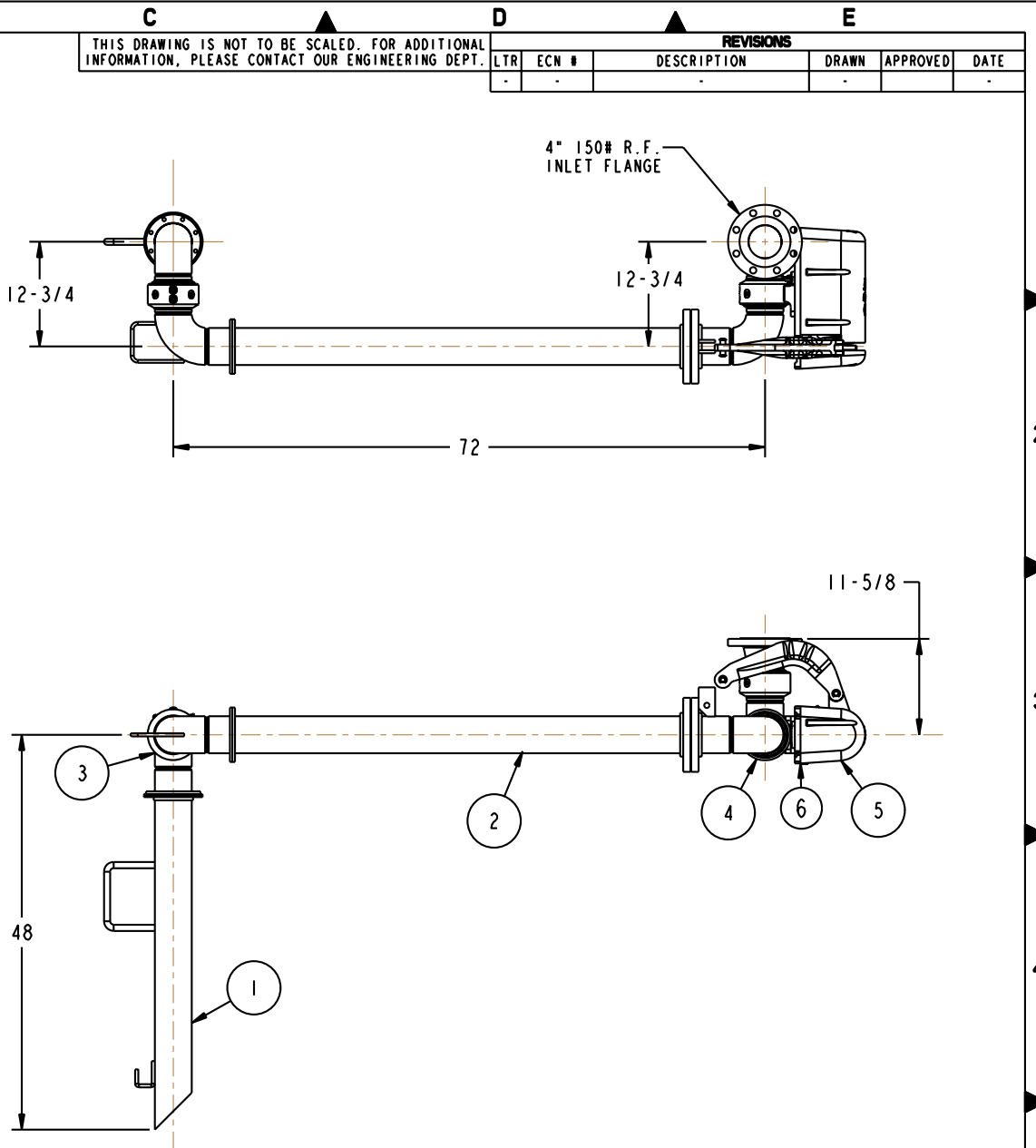
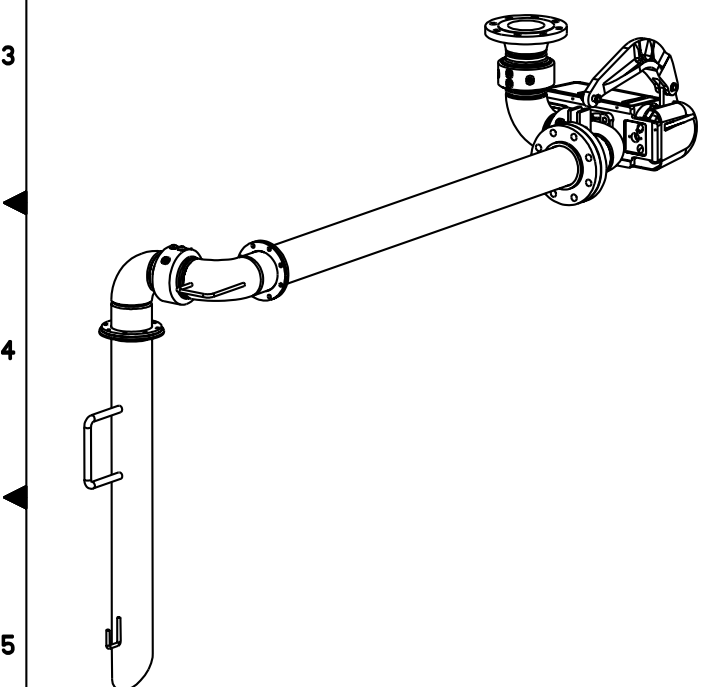


A		B	
MATERIALS OF CONSTRUCTION		CARBON STEEL	
SWIVEL JOINT SEALS		FLUOROCARBON GFLT	
PRODUCT		ASPHALT	
ESTIMATED WEIGHT		290 LBS	
MOMENT LOAD AT SPRING		7,500 IN-LBS	
FLANGE GASKETS		KLINGER SIL C5400	
TEST PRESSURE		90 PSI	
PRODUCT RETENTION		NO	
WEIGHT BY OTHERS		TRACE & INSULATION @ 2.5 LBS/FT	
6	I	EA	788LLH-0045 LOCKDOWN UNIT
5	I	EA	790CLH-0045 LEFT HAND EZ ADJUST 'C' SPRING BALANCE
4	I	EA	3458FSBD-0402 4" SWIVEL, CST
3	I	EA	3444FT-A145 4" SWIVEL, CST
2	I	EA	N/A 4" CST PIPE SPOOL
1	I	EA	N/A 4" CST DROP PIPE SPOOL W/HANDLES
ITEM	QTY	UM	PART NUMBER DESCRIPTION



CONFIDENTIAL THIS DOCUMENT CONTAINS INFORMATION WHICH IS PROPRIETARY TO OPW, AND SHOULD BE PROTECTED ACCORDINGLY.				DESCRIPTION: 4" TOP LOADING ARM, DFLH	
SIGNATURES		MO-DA-YR	REV:	PART NUMBER:	
DRAWN: JLP		12/07/09	-	J33F-H709	
CHECKED: -		-	SIZE: D	SCALE: 0.100	
MATERIAL:		WEIGHT: -	SHEET 1 OF 3		
				Engineered Systems A ROTTED Resources Company Lebanon, Ohio 45036 USA 3D GENERATED DRAWING	